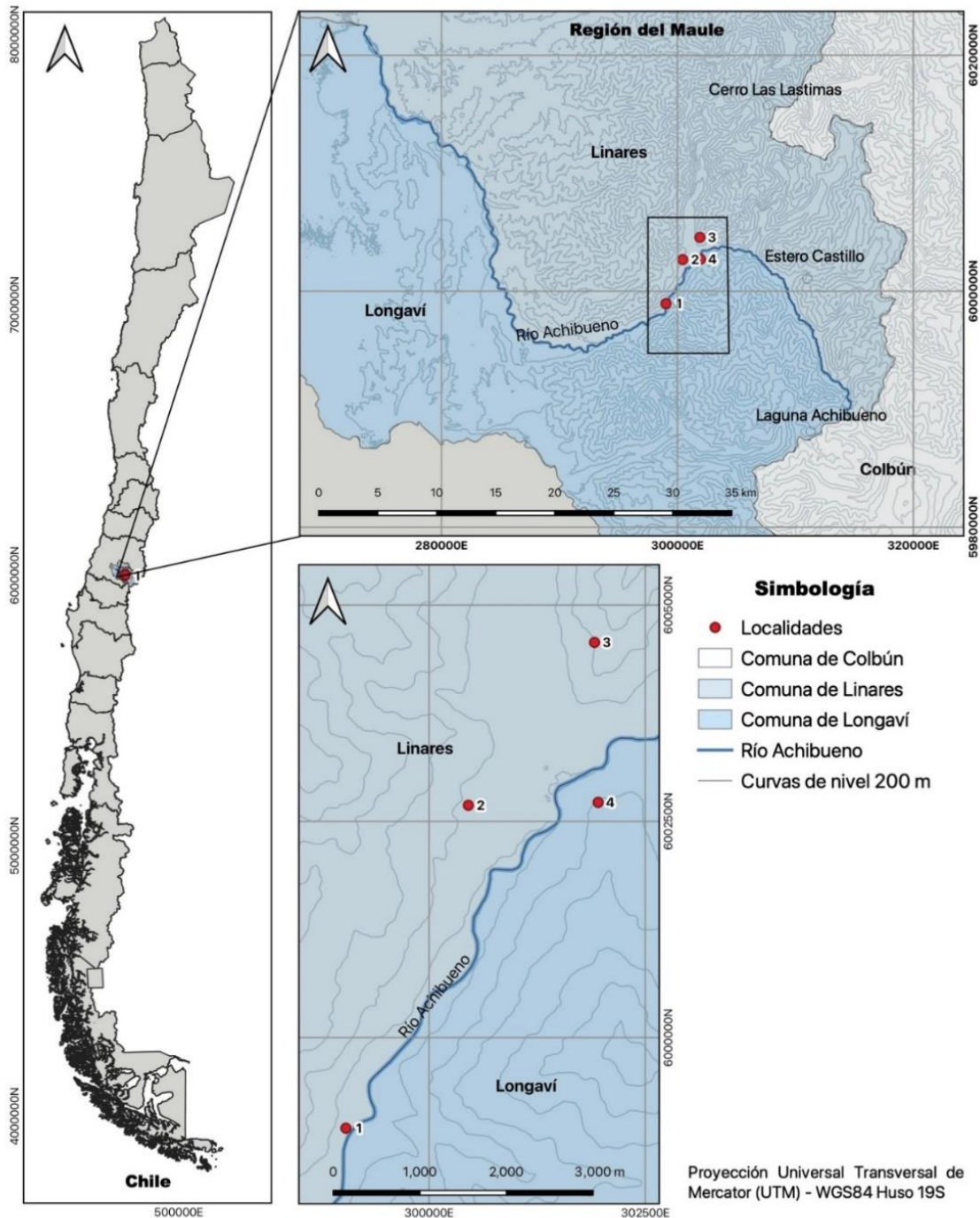


Lichen diversity associated with native forest of the Achibueno river ravine, Maule region, Chile

Diversidad líquénica asociada al bosque nativo del Cajón del río Achibueno, región del Maule, Chile

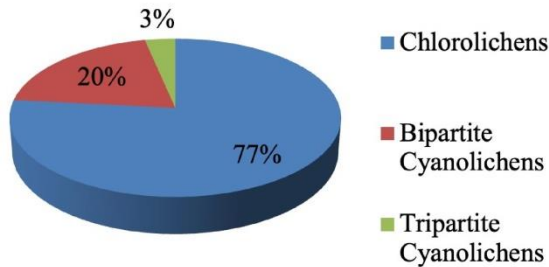
Iris Pereira, Ignacio Errazúriz, Pablo Garrido & Marco A. Molina-Montenegro

<https://gayanabotanica.cl/index.php/gb/article/view/403>

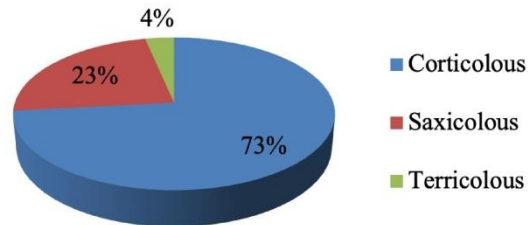


SUPPLEMENTARY FIGURE 1: Geographical location of the sampling sites. / Localización geográfica de los sitios de muestreo.

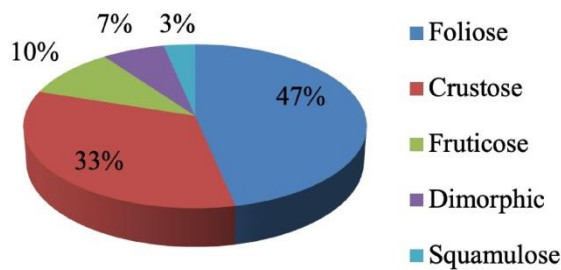
2a Photobiont



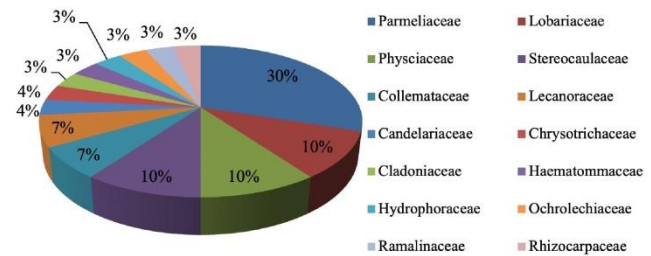
2b Substrate



2c Growth form



2d Family



SUPPLEMENTARY FIGURE 2: Classification of the lichen found in the study area by their photobiont (Fig. 2a), by colonized substrate (Fig. 2b), according to their growth form (Fig. 2c) and distribution of the lichen richness by family in the studied area (Fig. 2d). / Clasificación de las especies líquénicas según su fotobionte (Fig. 2a), por sustrato colonizado (Fig. 2b), de acuerdo su forma de crecimiento (Fig. 2c) y distribución de la riqueza líquénica por familia en el área de estudio (Fig. 2d).



Upper face of the thallus of Crocodia guilleminii (Mont.) Nyl



Underside of the thallus of Crocodia guilleminii (Mont.) Nyl



Thallus of Hypogymnia fragillima (Hillmann) Rass.

SUPPLEMENTARY FIGURE 3: New records of lichen species in the study area. *Crocodia guilleminii* (Mont.) Nyl. (Figs 3a, 3b) and *Hypogymnia fragillima* (Hillmann) Rass. (Fig. 3c). / Nuevas citas de especies liquénicas en área de estudio. *Crocodia guilleminii* (Mont.) Nyl. (Figs. 3a, 3b) and *Hypogymnia fragillima* (Hillmann) Rass. (Fig. 3c).